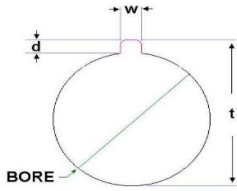


PFEIFER INDUSTRIES, LLC.

2180 Corporate Lane, Suite 104 ~ Naperville, IL 60563-1639 USA

Phone (630) 596-9000 Fax (630) 596-9002

Email: info@pfeiferindustries.com Website: www.pfeiferindustries.com



(Metric) Bore / Keyway - DIN 7154, H7 Metric Bore and DIN 6885, Js9 Square Keyway Tolerances

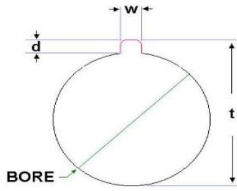
| (Metric) Bore | | Bore (inches) | Keyway Width (w) | | Keyway Height (d) Reference | (t) |
|---------------|----------------------------------|--------------------------------|------------------|--------------------------------|-----------------------------|--------------------------------|
| 8mm | <u>Minimum</u> <u>Maximum</u> | <u>0.315"</u> <u>0.316"</u> | 2mm | <u>0.078"</u> <u>0.079"</u> | 1mm | <u>0.354"</u> <u>0.358"</u> |
| 9mm | <u>Minimum</u> <u>Maximum</u> | <u>0.354"</u> <u>0.355"</u> | 3mm | <u>0.118"</u> <u>0.119"</u> | 1.4mm | <u>0.409"</u> <u>0.413"</u> |
| 10mm | <u>Minimum</u> <u>Maximum</u> | <u>0.394"</u> <u>0.394"</u> | 3mm | <u>0.118"</u> <u>0.119"</u> | 1.4mm | <u>0.449"</u> <u>0.453"</u> |
| 11mm | <u>Minimum</u> <u>Maximum</u> | <u>0.433"</u> <u>0.434"</u> | 4mm | <u>0.157"</u> <u>0.158"</u> | 1.8mm | <u>0.504"</u> <u>0.508"</u> |
| 12mm | <u>Minimum</u> <u>Maximum</u> | <u>0.472"</u> <u>0.473"</u> | 4mm | <u>0.157"</u> <u>0.158"</u> | 1.8mm | <u>0.543"</u> <u>0.547"</u> |
| 14mm | <u>Minimum</u> <u>Maximum</u> | <u>0.551"</u> <u>0.552"</u> | 5mm | <u>0.196"</u> <u>0.197"</u> | 2.3mm | <u>0.642"</u> <u>0.646"</u> |
| 15mm | <u>Minimum</u> <u>Maximum</u> | <u>0.591"</u> <u>0.591"</u> | 5mm | <u>0.196"</u> <u>0.197"</u> | 2.3mm | <u>0.681"</u> <u>0.685"</u> |
| 16mm | <u>Minimum</u> <u>Maximum</u> | <u>0.630"</u> <u>0.631"</u> | 5mm | <u>0.196"</u> <u>0.197"</u> | 2.3mm | <u>0.720"</u> <u>0.724"</u> |
| 17mm | <u>Minimum</u> <u>Maximum</u> | <u>0.669"</u> <u>0.670"</u> | 5mm | <u>0.196"</u> <u>0.197"</u> | 2.3mm | <u>0.760"</u> <u>0.764"</u> |
| 19mm | <u>Minimum</u> <u>Maximum</u> | <u>0.748"</u> <u>0.749"</u> | 6mm | <u>0.236"</u> <u>0.237"</u> | 2.8mm | <u>0.858"</u> <u>0.862"</u> |
| 20mm | <u>Minimum</u> <u>Maximum</u> | <u>0.787"</u> <u>0.788"</u> | 6mm | <u>0.236"</u> <u>0.237"</u> | 2.8mm | <u>0.898"</u> <u>0.902"</u> |
| 22mm | <u>Minimum</u> <u>Maximum</u> | <u>0.866"</u> <u>0.867"</u> | 6mm | <u>0.236"</u> <u>0.237"</u> | 2.8mm | <u>0.976"</u> <u>0.980"</u> |
| 24mm | <u>Minimum</u> <u>Maximum</u> | <u>0.945"</u> <u>0.946"</u> | 8mm | <u>0.314"</u> <u>0.316"</u> | 3.3mm | <u>1.075"</u> <u>1.083"</u> |
| 25mm | <u>Minimum</u> <u>Maximum</u> | <u>0.984"</u> <u>0.985"</u> | 8mm | <u>0.314"</u> <u>0.316"</u> | 3.3mm | <u>1.114"</u> <u>1.122"</u> |

PFEIFER INDUSTRIES, LLC.

2180 Corporate Lane, Suite 104 ~ Naperville, IL 60563-1639 USA

Phone (630) 596-9000 Fax (630) 596-9002

Email: info@pfeiferindustries.com Website: www.pfeiferindustries.com



(Metric) Bore / Keyway - DIN 7154, H7 Metric Bore and DIN 6885, Js9 Square Keyway Tolerances

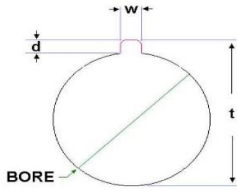
| (Metric) Bore | | Bore (inches) | Keyway Width (w) | | Keyway Height (d) Reference | (t) |
|---------------|---------|---------------|------------------|--------|-----------------------------|--------|
| 28mm | Minimum | 1.102" | 8mm | 0.314" | 3.3mm | 1.232" |
| | Maximum | 1.103" | | 0.316" | | 1.240" |
| 30mm | Minimum | 1.181" | 8mm | 0.314" | 3.3mm | 1.311" |
| | Maximum | 1.182" | | 0.316" | | 1.319" |
| 32mm | Minimum | 1.260" | 10mm | 0.393" | 3.3mm | 1.390" |
| | Maximum | 1.261" | | 0.394" | | 1.398" |
| 35mm | Minimum | 1.378" | 10mm | 0.393" | 3.3mm | 1.508" |
| | Maximum | 1.379" | | 0.394" | | 1.516" |
| 38mm | Minimum | 1.496" | 10mm | 0.393" | 3.3mm | 1.626" |
| | Maximum | 1.497" | | 0.394" | | 1.634" |
| 40mm | Minimum | 1.575" | 12mm | 0.472" | 3.3mm | 1.705" |
| | Maximum | 1.576" | | 0.473" | | 1.713" |
| 42mm | Minimum | 1.654" | 12mm | 0.472" | 3.3mm | 1.783" |
| | Maximum | 1.655" | | 0.473" | | 1.791" |
| 45mm | Minimum | 1.772" | 14mm | 0.550" | 3.8mm | 1.921" |
| | Maximum | 1.773" | | 0.552" | | 1.929" |
| 48mm | Minimum | 1.890" | 14mm | 0.550" | 3.8mm | 2.039" |
| | Maximum | 1.891" | | 0.552" | | 2.047" |
| 50mm | Minimum | 1.969" | 14mm | 0.550" | 3.8mm | 2.118" |
| | Maximum | 1.969" | | 0.552" | | 2.126" |
| 52mm | Minimum | 2.047" | 16mm | 0.629" | 4.3mm | 2.217" |
| | Maximum | 2.048" | | 0.631" | | 2.224" |
| 55mm | Minimum | 2.165" | 16mm | 0.629" | 4.3mm | 2.335" |
| | Maximum | 2.167" | | 0.631" | | 2.343" |
| 58mm | Minimum | 2.283" | 16mm | 0.629" | 4.3mm | 2.453" |
| | Maximum | 2.285" | | 0.631" | | 2.461" |
| 60mm | Minimum | 2.362" | 18mm | 0.708" | 4.4mm | 2.535" |
| | Maximum | 2.363" | | 0.710" | | 2.543" |

PFEIFER INDUSTRIES, LLC.

2180 Corporate Lane, Suite 104 ~ Naperville, IL 60563-1639 USA

Phone (630) 596-9000 Fax (630) 596-9002

Email: info@pfeiferindustries.com Website: www.pfeiferindustries.com



(Metric) Bore / Keyway - DIN 7154, H7 Metric Bore and DIN 6885, Js9 Square Keyway Tolerances

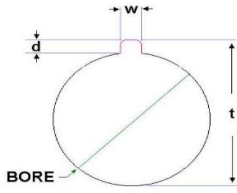
| (Metric) Bore | | Bore (inches) | Keyway Width (w) | | Keyway Height (d) Reference | (t) |
|---------------|---------|---------------|------------------|--------|-----------------------------|--------|
| 62mm | Minimum | 2.441" | 18mm | 0.708" | 4.4mm | 2.614" |
| | Maximum | 2.442" | | 0.710" | | 2.622" |
| 65mm | Minimum | 2.559" | 18mm | 0.708" | 4.4mm | 2.732" |
| | Maximum | 2.560" | | 0.710" | | 2.740" |
| 68mm | Minimum | 2.677" | 20mm | 0.786" | 4.9mm | 2.870" |
| | Maximum | 2.678" | | 0.788" | | 2.878" |
| 72mm | Minimum | 2.835" | 20mm | 0.786" | 4.9mm | 3.028" |
| | Maximum | 2.836" | | 0.788" | | 3.035" |
| 75mm | Minimum | 2.953" | 20mm | 0.786" | 4.9mm | 3.146" |
| | Maximum | 2.954" | | 0.788" | | 3.154" |
| 78mm | Minimum | 3.071" | 22mm | 0.865" | 5.4mm | 3.283" |
| | Maximum | 3.072" | | 0.867" | | 3.291" |
| 80mm | Minimum | 3.150" | 22mm | 0.865" | 5.4mm | 3.362" |
| | Maximum | 3.151" | | 0.867" | | 3.370" |
| 82mm | Minimum | 3.228" | 22mm | 0.865" | 5.4mm | 3.441" |
| | Maximum | 3.230" | | 0.867" | | 3.449" |
| 85mm | Minimum | 3.346" | 22mm | 0.865" | 5.4mm | 3.559" |
| | Maximum | 3.348" | | 0.867" | | 3.567" |
| 88mm | Minimum | 3.465" | 25mm | 0.983" | 5.4mm | 3.677" |
| | Maximum | 3.466" | | 0.985" | | 3.685" |
| 90mm | Minimum | 3.543" | 25mm | 0.983" | 5.4mm | 3.756" |
| | Maximum | 3.545" | | 0.985" | | 3.764" |
| 92mm | Minimum | 3.622" | 25mm | 0.983" | 5.4mm | 3.835" |
| | Maximum | 3.623" | | 0.985" | | 3.843" |
| 95mm | Minimum | 3.740" | 25mm | 0.983" | 5.4mm | 3.953" |
| | Maximum | 3.742" | | 0.985" | | 3.961" |
| 98mm | Minimum | 3.858" | 28mm | 1.101" | 6.4mm | 4.110" |
| | Maximum | 3.860" | | 1.103" | | 4.118" |

PFEIFER INDUSTRIES, LLC.

2180 Corporate Lane, Suite 104 ~ Naperville, IL 60563-1639 USA

Phone (630) 596-9000 Fax (630) 596-9002

Email: info@pfeiferindustries.com Website: www.pfeiferindustries.com



(Metric) Bore / Keyway - DIN 7154, H7 Metric Bore and DIN 6885, Js9 Square Keyway Tolerances

| (Metric) Bore | | Bore (inches) | Keyway Width (w) | | Keyway Height (d) Reference | (t) |
|---------------|----------------------------------|--------------------------------|------------------|--------------------------------|-----------------------------|--------------------------------|
| 100mm | <u>Minimum</u> <u>Maximum</u> | <u>3.937"</u> <u>3.938"</u> | 28mm | <u>1.101"</u> <u>1.103"</u> | 6.4mm | <u>4.189"</u> <u>4.197"</u> |
| 102mm | <u>Minimum</u> <u>Maximum</u> | <u>4.016"</u> <u>4.017"</u> | 28mm | <u>1.101"</u> <u>1.103"</u> | 6.4mm | <u>4.268"</u> <u>4.276"</u> |
| 105mm | <u>Minimum</u> <u>Maximum</u> | <u>4.134"</u> <u>4.135"</u> | 28mm | <u>1.101"</u> <u>1.103"</u> | 6.4mm | <u>4.386"</u> <u>4.394"</u> |
| 108mm | <u>Minimum</u> <u>Maximum</u> | <u>4.252"</u> <u>4.253"</u> | 28mm | <u>1.101"</u> <u>1.103"</u> | 6.4mm | <u>4.504"</u> <u>4.512"</u> |
| 110mm | <u>Minimum</u> <u>Maximum</u> | <u>4.331"</u> <u>4.332"</u> | 28mm | <u>1.101"</u> <u>1.103"</u> | 6.4mm | <u>4.583"</u> <u>4.591"</u> |